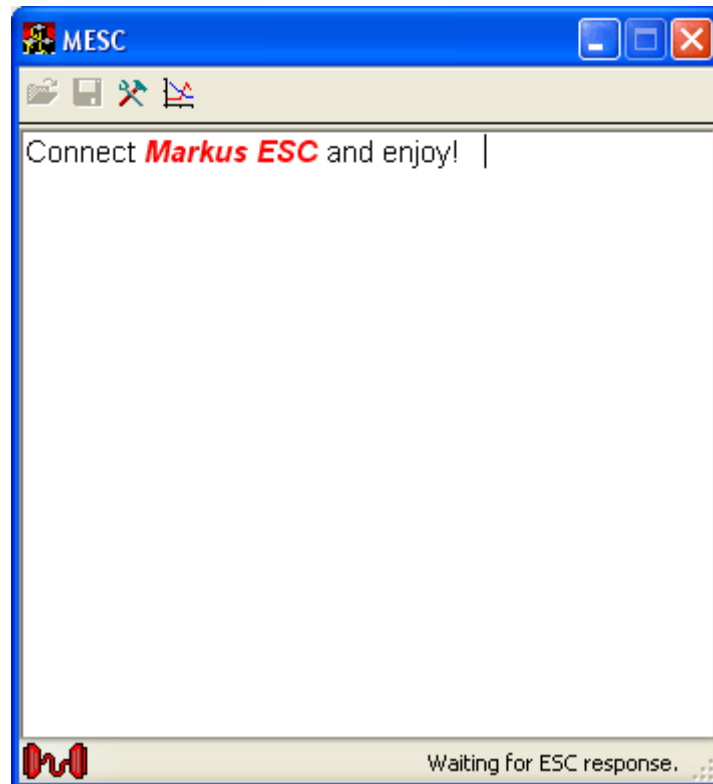

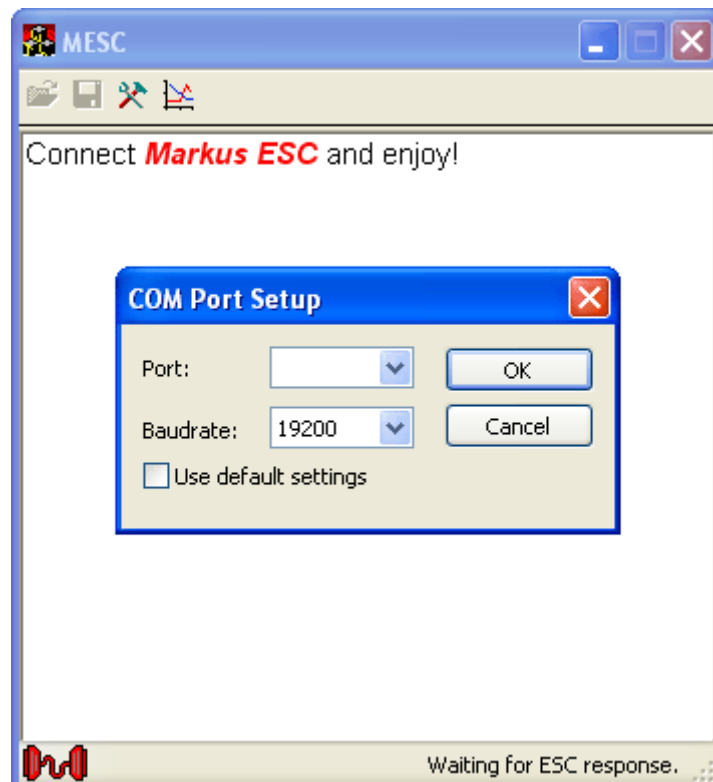


1. THE INSTALLING OF THE USB cable's DRIVER

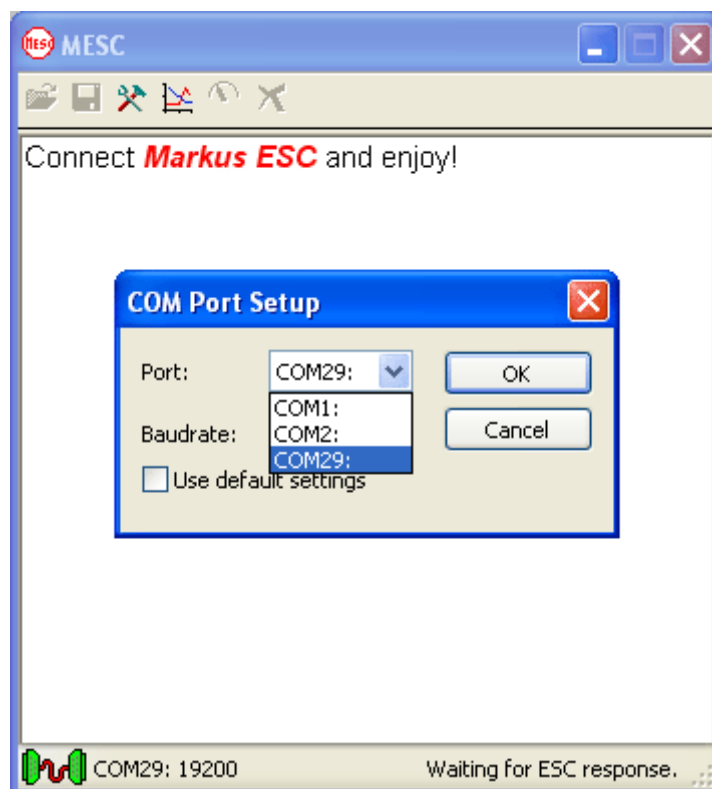
1. Install the driver
2. Connect the USB cable to your PC
3. Microsoft Windows will find and install a new device
4. Run MESC.exe
5. You will see the window



6. Click the key 
7. You will see the window



8. Choose the COM Port (usually max number of COM port) and click "OK"

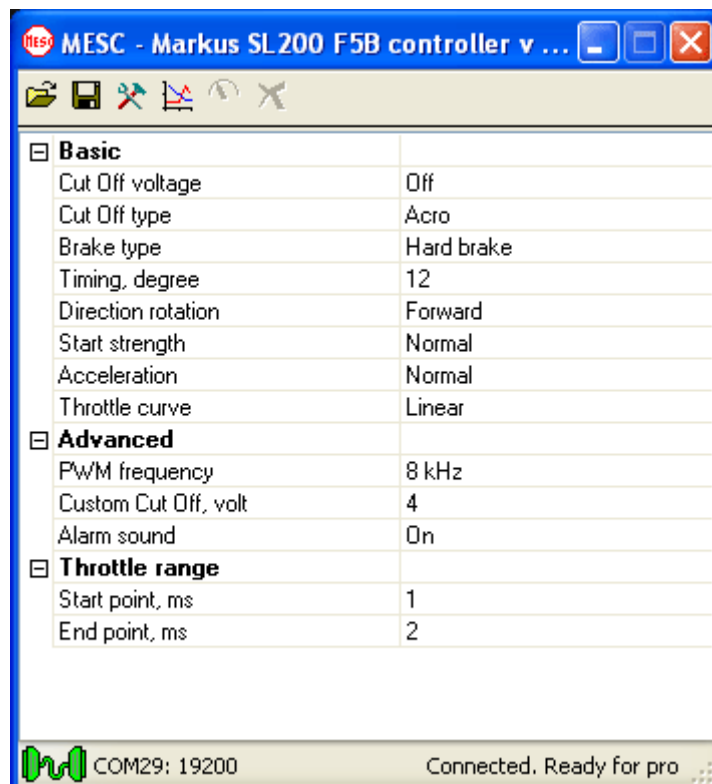


2. THE VIEWING AND CHANGING THE SETTINGS OF ESC

1. Connect the USB cable to the Markus ESC.
2. Connect main battery pack to the Markus ESC.

Attention! Always at first connect the USB cable to the ESC then connect a battery pack to the ESC.

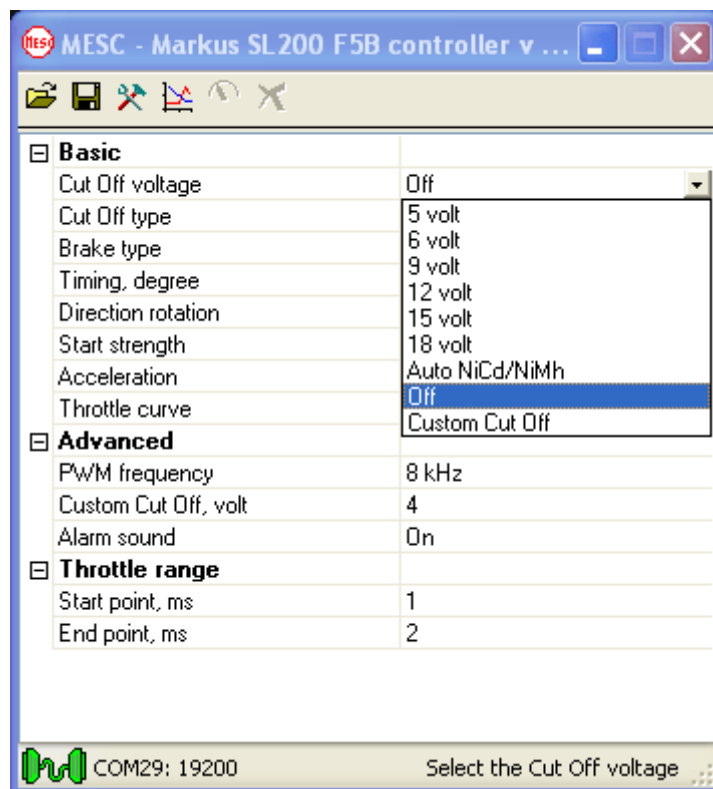
If you connected all correctly so the LED of ESC "shines" and you will see the current settings of ESC in this window



3. Click on the parameter which you want to change

Example "**Cut Off voltage**"

You will see the new window



Choose a new setting which you need.

Now your ESC has new settings.

Notice! You don't need to do special actions to save the new settings. The new settings saved automatically.

You can change all of settings in like manner.

After the changing of settings disconnect the main battery pack and USB cable from the Markus ESC.

Enjoy your flying!